



This is a game where you match cards that have words in Ainu and English with picture cards. These "creature cards" depict living creatures that have interesting names that you'd never guess from the English words for them. Learn them all, then quiz your family and friends! You can use them to play concentration and other games – it's entirely up to you. In addition to the creatures depicted on these cards, there are Ainu names for other living things that you're familiar with, such as *itunnap* (ant) and *cikupakikir* (stag beetle). Be sure to find out what they are!

## Implements and Materials You'll Need

- Sturdy paper
- Scissors or utility knife
- Ruler
- Pencil
- Tweezers
- Glue (Using stick glue for broad surfaces and wood glue for small and intricate pieces is recommended.)
- Pointed object, such as a ballpoint pen that has run out of ink
- Toothpicks (These are useful for applying glue thinly and to small and intricate pieces.)

## What the Symbols Mean

- |           |             |       |                   |
|-----------|-------------|-------|-------------------|
| (1),(2)   | Part number | ----- | Outward fold line |
| —         | Cut line    | ----- | Inward fold line  |
| [Red Box] | Cutout      | ●     | Tab               |
|           |             | →     | Apply glue        |

## How to Make

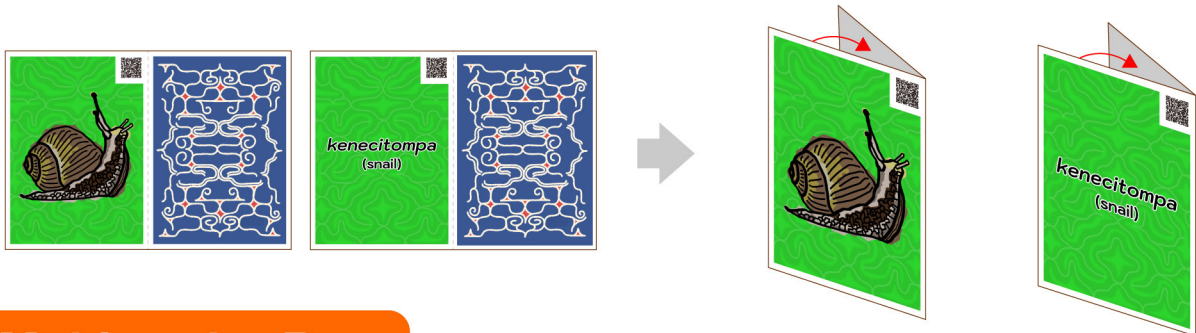
1. Use the pointed object to make creases along the fold lines.
2. Before cutting out the pieces, use the pencil to write their part numbers on the back of each.
3. Carefully cut out the pieces along their cut lines.
4. Following the instructions for outward and inward folds, fold the parts along the dotted lines.
5. Assemble by attaching the pieces as shown in the diagram.

## Important Notes – For Parents and Guardians

- Preschool children must be supervised by an adult and be kept in sight while assembling the item. Papercraft uses a variety of implements. To prevent unforeseen accidents, please give careful attention to the following points while enjoying crafting.
- Be very careful to avoid injury when children use scissors, utility knives, and other objects with blades.
  - Be careful to ensure that small children do not put glue or adhesive in their mouths or swallow small pieces.
  - This craft uses paper, which may become unusable if it gets wet. Be careful not to handle pieces with wet hands.
  - Display near open flame or other heat sources can cause fire or discoloration.
  - Some finished papercraft items have pointed areas. Be careful to ensure that children do not strike others with these items.

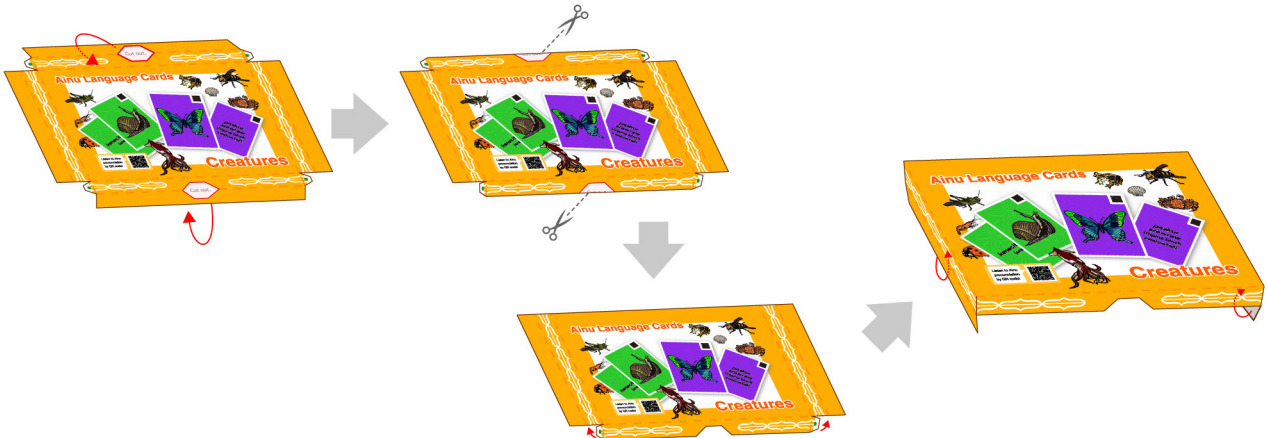
The Foundation for Ainu Culture / Illustrations: Ninum (Konomi Arata)

## ▼ Making the Cards



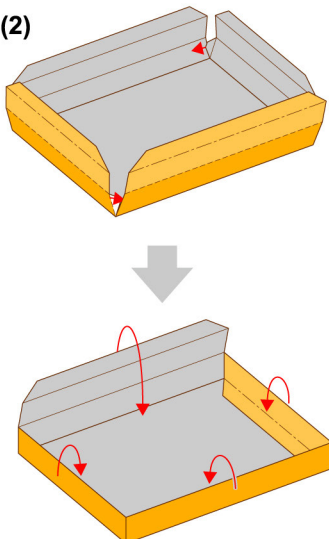
## ▼ Making the Box

**1** (1)

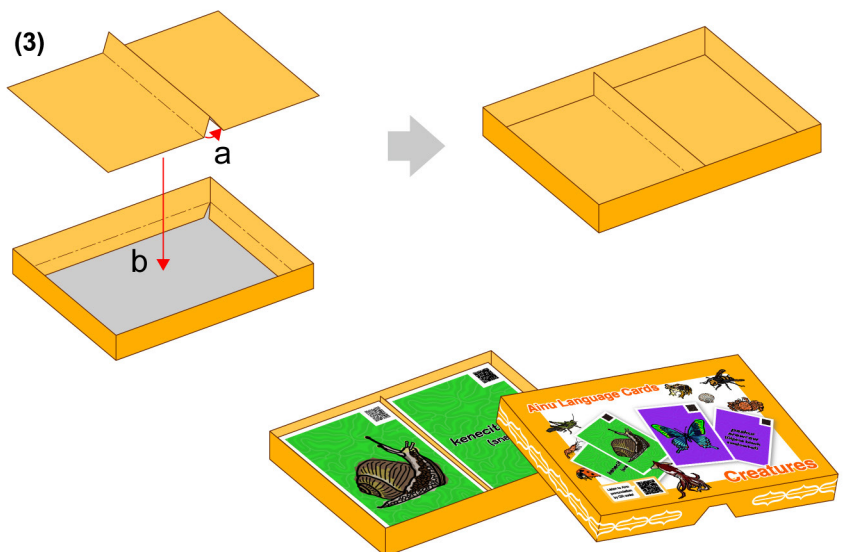


**2**

(2)



(3)



**All done!**

## ▼ How to Play

Try to match the picture cards with the cards that have words in English and Ainu.

### 1 Concentration Game

Lay the cards face down, then take turns flipping them over two at a time to match the pictures to the words.

The person who gets the most pairs of cards is the winner.



### 2 Karuta Game

Listen to the Ainu name and try to match it with the right picture card. Take turns playing, and you'll be learning Ainu before you know it.



Can you find more ways to have fun? Try to come up with your own original games!